

Raising Expectations

ESS LIFTS



Elevating Efficiency

EQUIPMENT

ESS LIFTS - AN AUTHORIZED DEALER

www.esslifts.com


ISO9001 / ISO14001

//2019.01

FE3R N Series



Three-wheel Rear Drive Forklift

 1500-2500lbs



High Efficiency



High Mobility



Cost-effective



Compact Design

NEW *Noblelift Products*
ARRIVAL

- Smart & Compact Design with Great Mobility
- Maintenance-free AC Drive System
- Intelligent Computer Controller System
- On-board Self-Diagnostic Display
- Excellent Safety and Reliability
- Easy Service & Maintenance
- Standard Side Battery Extraction
- Great Comfort and Ergonomic Design
- Easy EPS Steering (for FE3R15-25N)

FE3R N Series

Three-wheel Rear Drive Forklift

Capacity:

1500lbs
2000lbs
2500lbs

Maximum lifting

Height:

15N-157in
20/25N-197in

Overall Width:

35inch



24Volt Zapi Controller

Variable wheelbase design:

Mast tilting function realised through the movement of front axle





Three-wheel Rear Drive Forklift **FE3R N Series**



- Battery compartment with rollers for 15-25N



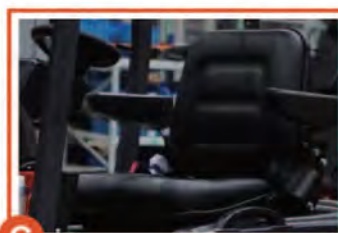
Fully openable covers for easy service and maintenance. Standard Side Battery Extraction for easy battery replacement.



A



B



C



D



E



F



G



H

A Front LED Lights, Steering lights, Rear Combination Lights, Warning light standard, safe to work in dark environment such as containers or in the night.

D Small Diameter Solid Front Wheels for easy and smooth motion.

G Optional different battery capacities for different operation needs, optional Aquamatic battery self-filling system for easy battery maintenance.

B-C Small Diameter Steering Wheel with Spinner Knob, Adjustable Steering wheel position and seat to optimize the comfortness of the operator for long time operation.

E-F Intelligent ZAPI or Curtis Self-diagnostic display for easy operation and maintenance, Standard Rear Wheel Position Sensor & Display with Speed Reduction at Turning.

H Extremely compact design with small width and turning radius for easy operation in confined spaces.

FE3R15-25N Mast Table

Designation	Lift height h_1 (in)	Free lift h_2 (in)	Closed mast height h_3 (in)	Extended mast height h_4 (in)	Tilt forward/backward α/β (°)	Capacity table(lbs) C=19.7in without sideshift, single solid tyres		
						FE3R15N	FE3R20N	FE3R25N
Two-stage ZT	98	4	66	132	3/5	1760	2200	2640
	106	4	71	140	3/5	1760	2200	2640
	118	4	77	152	3/5	1760	2200	2640
	130	4	85	164	3/5	1650	2200	2640
	138	4	87	172	3/5	1584	2024	2310
	146	4	91	180	3/5	1540	1870	2090
Two-stage ZZ	157	4	99	192	3/5	1430	1760	1980
	98	34	68	132	3/5	1760	2200	2640
	106	38	71	140	3/5	1760	2200	2640
	118	44	77	152	3/5	1760	2200	2640
	130	50	85	164	3/5	1650	2200	2640
	138	54	87	172	3/5	1548	2024	2310
Three-stage DZ	146	58	91	180	3/5	1540	1760	2090
	157	64	99	192	3/5	1430	1650	1980
	157	42	75	140	3/5	/	1650	1980
	171	46	79	149	3/3	/	1430	1760
	177	48	81	153	3/3	/	1210	1540
	189	52	85	161	3/3	/	9900	1210
	197	56	89	167	3/3	/	880	990

Free lift height (no load-backrest) +12in



Three-wheel Rear Drive Forklift FE3R N Series

N Battery Balance Weight Type Forklift (VDI 2198)

Identification

		NOBLELIFT			
1.1	Manufacture(abbreviation)				
1.2	Manufacturer's type designation	FE3R15N	FE3R20N	FE3R25N	
1.3	Drive:electric(battery or mains),diesel,petrol gas,manual)	Electric	Electric	Electric	
1.4	Type of operation(hand,pedestrian,standing,seated,order-picker)	Seated	Seated	Seated	
1.5	Load capacity/rated load	Q(lbs)	1760	2200	2640
1.6	Load centre distance	C(in)	19.7	19.7	19.7
1.8	Load distance,centre of drive axle to fork	x(in)	10.4	10.4	10.4
1.9	wheelbase	y(in)	33.1/36.3	37.4/40.7	39/42.2

Weights

2.1	Service weight incl. battery(see line 6.5)	lbs	3960	4202	4576
2.2	Axle loading ,laden front/rear	lbs	5060/660	5720/682	6490/726
2.3	Axle loading,unladen front/rear	lbs	1694/2244	1870/2332	1936/2684

Wheels, Chassis

3.1	Type:solid rubber,superelastic,pneumatic,polyurethane		solid rubber/polyurethane	solid rubber/polyurethane	solid rubber/polyurethane
3.2	Tyres size,front		13x4 1/2x8	13x4 1/2x8	13x4 1/2x8
3.3	Tyres size,rear		φ9.8x3.2	φ9.8x3.2	φ13.5x3.2
3.5	Wheels,number front/rear(X-driven wheels)		2/1x	2/1x	2/1x
3.6	Track width,front	b _w (in)	30.1	30.1	30.1
3.7	Track width,rear	b _r (in)	/	/	/

Basic Dimensions

4.1	Mast/fork carriage tilt forward/backward	α/β(°)	3/5	3/5	3/5
4.2	lowered mast height	h ₁ (in)	77.4	77.4	77.4
4.3	Free lift	h ₂ (in)	3.7	3.7	3.7
4.4	Lift height	h ₃ (in)	118.1	118.1	118.1
4.5	Extended mast height	h ₄ (in)	152.2	386.5	152.2
4.7	Overhead load guardheight	h ₅ (in)	77.8	77.8	77.8
4.8	Seat height/standing height	h ₆ (in)	38.6	38.6	38.6
4.12	Coupling height	h _w (in)	21.3	21.3	21.3
4.19	Overall length	l ₁ (in)	90.2	94.5	96.9
4.20	Length to face of forks	l ₂ (in)	53.9	58.3	60.8
4.21	Overall width	b ₁ (in)	34.6	34.6	34.6
4.22	Fork dimensions	s/e/l(in)	1.4/3.9/36.2	1.4/3.9/36.2	1.4/3.9/36.2
4.24	Fork carriage width	l ₃ (in)	32.5	32.5	32.5
4.31	Ground clearance ,laden,under mast	m ₁ (in)	3.1	3.1	3.1
4.32	Ground clearance,centre of wheelbase	m ₂ (in)	3.5	3.5	3.5
4.33	Aisle width for pallets 1000x1200 crossways	Ast ₁ (in)	108.7	115.0	116.1
4.34	Aisle width for pallets 800x1200 lengthways	Ast ₂ (in)	113.3	119.6	120.8
4.35	Turning radius	Wa ₁ (in)	45.7	52.0	53.1

Performance Data

5.1	Travel speed,laden/unladen	mline/h	5.0/5.6	4.7/5.6	4.3/5.6
5.2	Lift speed,laden/unladen	fpm	3.3/5.5	3.2/4.3	3.0/4.3
5.3	lowering speed,laden/unladen	fpm	4.5/4.3	3.2/3.9	3.3/3.9
5.5	Drawbar pull,laden/unladen S2 60 min	klf	3300/3740	3300/3740	3960/5060
5.7	Max.Gradient performance,laden/unladen S2 5 min	%	6/10	6/10	6/10
5.10	Service brake		hydr.	hydr.	hydr.

E-Motor

6.1	Drive motor rating S ₂ 60 min	hp	3.4	3.4	4
6.2	Lift motor rating at S ₂ 15%	hp	4	3	4
6.3	Battery standard		DIN	DIN	DIN
6.4	Battery voltage,nominal capacity K5	V/Ah	24/280 (360/400)(Optional)	24/420 (480/540)(Optional)	24/420 (480/540)(Optional)
6.5	Battery weight	lbs	616/800/942	862/968/1073	862/968/1073
	Battery dimensions l/w/h	in	31.7/10.3/24.7	31.7/14.6/24.7	31.7/14.6/24.7

Other Details

8.1	Type of drive control		AC	AC	AC
8.2	Operating pressure for attachments	psi	1700	2000	2200
8.3	Oil volume for attachments	gmp	253.6	253.6	253.6
8.4	Sound level at driver's ear according to EN 12 053	dB(A)	70	70	70



7719 Edison Ave
Fontana, Ca 92336



info@esslifts.com

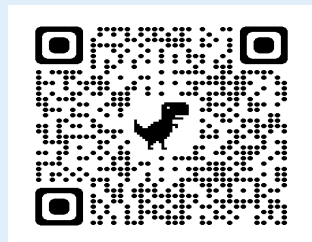


833-377-5438



www.esslifts.com

ESS LIFTS



Official Website

